

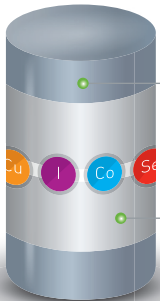


**WORLD LEADERS
IN BOLUS
TECHNOLOGY**



TRACE ELEMENT BOLUSES FOR ADULT SHEEP

BOLUS TECHNOLOGY

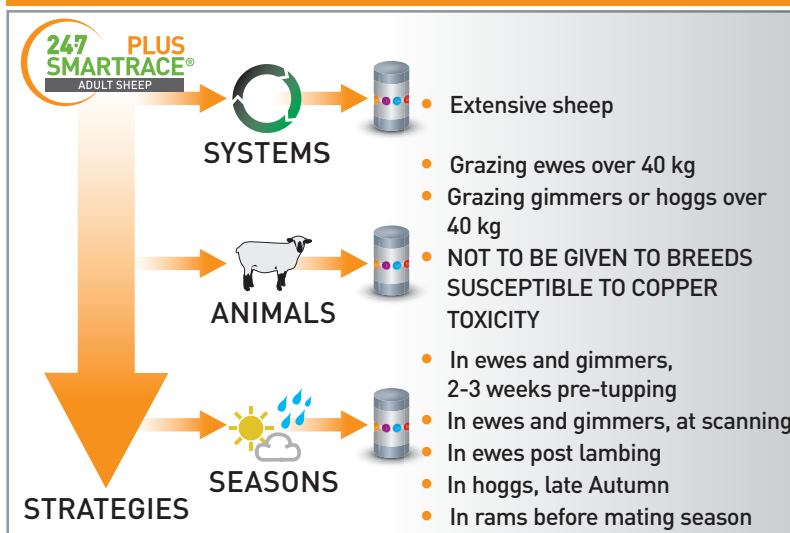


Two part bolus erodes releasing copper, iodine, cobalt and selenium

Wrapper dissolves in reticulum and bolus parts separate

ACTIVE COMPONENT	AVERAGE DAILY SUPPLY OVER 180 DAYS FROM 52 g BOLUS
Copper	18.7 mg
Iodine	4.2 mg
Cobalt	1.6 mg
Selenium	0.4 mg

WHEN TO USE AGRIMIN 24-7 SMARTRACE® PLUS



BENEFITS

- Eroding technology means consistent supply of trace elements
- Delivers full daily requirement of copper, iodine, cobalt and selenium
- Helps maintain ewe health through winter
- Optimise lambing percentages
- Helps maintain lamb vitality
- Contains no GMOs or material of animal origin
- Active life 180 days**
- One 52 g bolus should be given to each animal**
- Pack size - 50 boluses**

COBALT IS REQUIRED DAILY AS IT IS NOT STORED IN THE BODY

- Over winter a sheep's daily requirement for **COBALT** can increase, particularly in:
 - colder temperature
 - when they are in lamb
 - after lambing
- Rapidly growing grass, in Spring and Autumn, has less **COBALT** available



AGRIMIN LIMITED

Arlanda Way, Humberside Airport, Kirmington, North Lincolnshire, DN39 6YH, UK

Tel: +44 (0) 1652 688046 | Email: info@agrmin.co.uk | www.agrmin.co.uk

