

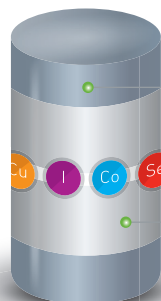


**WORLD LEADERS
IN BOLUS
TECHNOLOGY**



TRACE ELEMENT BOLUSES FOR ADULT SHEEP

BOLUS TECHNOLOGY

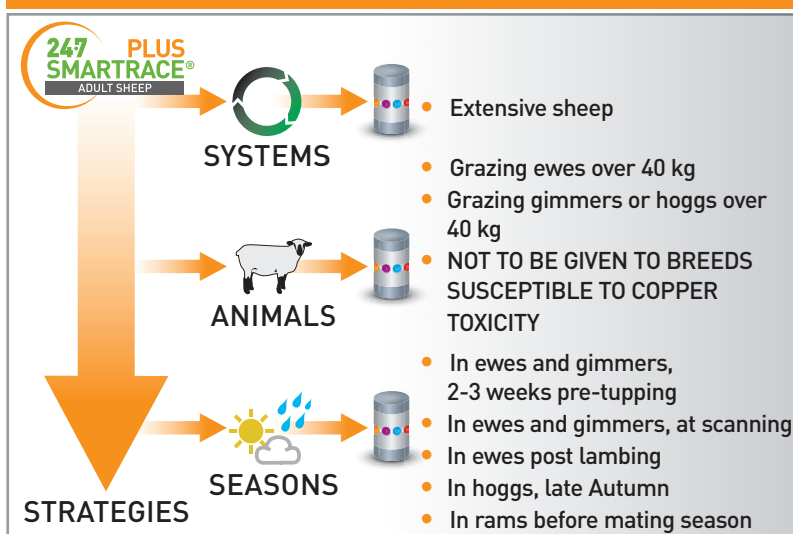


Two part bolus erodes releasing copper, iodine, cobalt and selenium

Wrapper dissolves in reticulum and bolus parts separate

ACTIVE COMPONENT	DAILY SUPPLY OVER 180 DAYS FROM 52 g BOLUS
Copper	18.7 mg
Iodine	4.2 mg
Cobalt	0.8 mg
Selenium	0.4 mg

WHEN TO USE AGRIMIN 24·7 SMARTRACE® PLUS



BENEFITS

- Eroding technology means consistent supply of trace elements
- Delivers full daily requirement of copper, iodine, cobalt and selenium
- Helps maintain ewe health through winter
- Optimise lambing percentages
- Helps maintain lamb vitality
- Approved by Organic Farmers & Growers
- Contains no GMOs or material of animal origin
- Active life 180 days**
- One 52 g bolus should be given to each animal**
- Pack size - 50 boluses**



AGRIMIN LIMITED

Arlanda Way, Humberside Airport, Kirmington, North Lincolnshire, DN39 6YH, UK

Tel: +44 (0) 1652 688046 | Email: info@agrmin.co.uk | www.agrmin.co.uk

